

Prepared by:

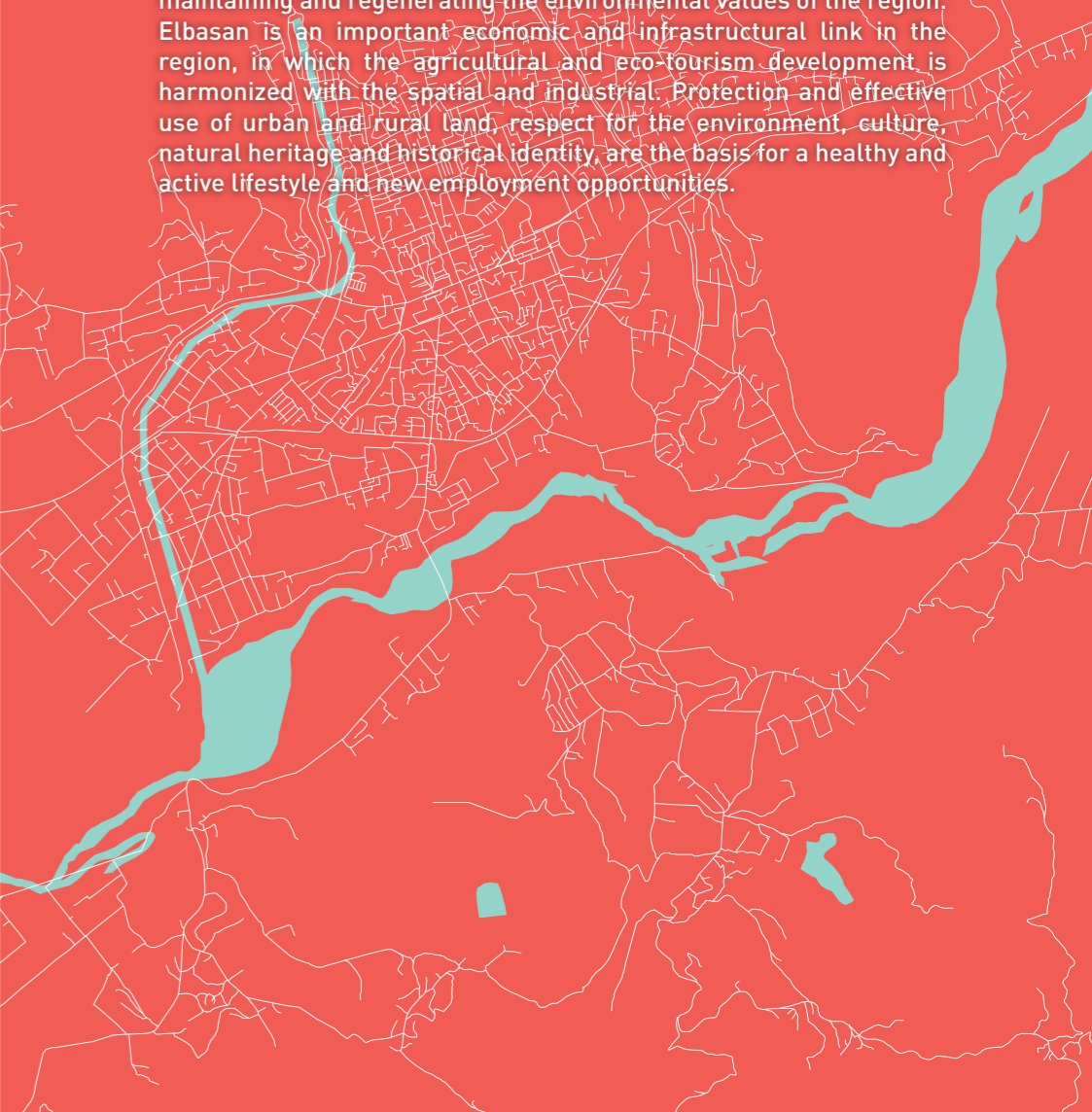
 AKPT

 AGENCIA KOMERCIALE E PLANIFIKIMIT TERRITORIAL

ELBASAN

2030 VISION

Elbasan a multi-functional center along Corridor IIIV and Via Egnatia, a city with high consistency in economic and social development, while maintaining and regenerating the environmental values of the region. Elbasan is an important economic and infrastructural link in the region, in which the agricultural and eco-tourism development is harmonized with the spatial and industrial. Protection and effective use of urban and rural land, respect for the environment, culture, natural heritage and historical identity, are the basis for a healthy and active lifestyle and new employment opportunities.





Elbasan, situated in the central Albania and bordered by Shkumbin river, is one of the biggest cities in the country. Hills surrounding the city, full of greenery and old olive-trees, adorn the city with a green crown and a panoramic sight. Elbasan has other places of outstanding beauty. Some of them would be: Bysheku, a picturesque area with cold water, and also old plane-trees and a historic site; Elbasan thermal baths, a marvel of nature with irreplaceable therapeutic features; Gjinari and Bukaniku forests, as natural destinations; also Labinoti and Krasta hills, which have a direct impact on the development of the city. The former old serpentine road connecting once Elbasan with Tirana, is now a favorite trail for recreational cyclists.

The city's famous old town, is represented by the castle district, where you can still admire the old city walls, built on the ruins of the Roman and Byzantine fortifications by the Ottoman sovereign. In the Castle Walls, one can still find old Christian settlements. The outskirts of the city is dotted with mosques and like everywhere in Albania, all the major religions live together in harmony.

Elbasan is home to the Summer Day festivities, a pagan feast celebrating the end of winter and the coming of summer. The city is one of the cultural capitals of Albania and it houses several museums. The Theatre Skampa is home to various concerts and theatre plays throughout the year.

A combination of traditional Albanian cuisine with Ottoman influences, make Elbasan famous for its rich culinary heritage.

WHY ELBASAN?

1. **Geographic position**, in the center of Albania and easily connected with borders and Northern and Southern part of Albania
2. **Professional labor force**
3. **Natural Resources and Tourism attraction** - the thermal waters of Elbasan
4. **Competitive cost in the region**
5. **An ex-industrial city** - was a hub for heavy industry, mostly metallurgic and metal processing factories

City location

Municipality of Elbasan lies in the center of Albania in an area of 872 km² and consists of 13 local administrative units. Elbasan is the third most economic developed region in Albania due to its geographic location. It links with the Capital Tirana through the highway Elbasan-Tirane in a distance of 41 km.

Distance to Hani Hotit, cross border with Montenegro, is 170 km. Distance to Qafe Thane, cross border with Macedonia, is 65 km.

Port of Durres, with daily trips to Italy and other countries, is only 78 km away from the city of Elbasan.

In a distance of 128 km there is the harbor of Vlore, with weekly connections with Italy as well.

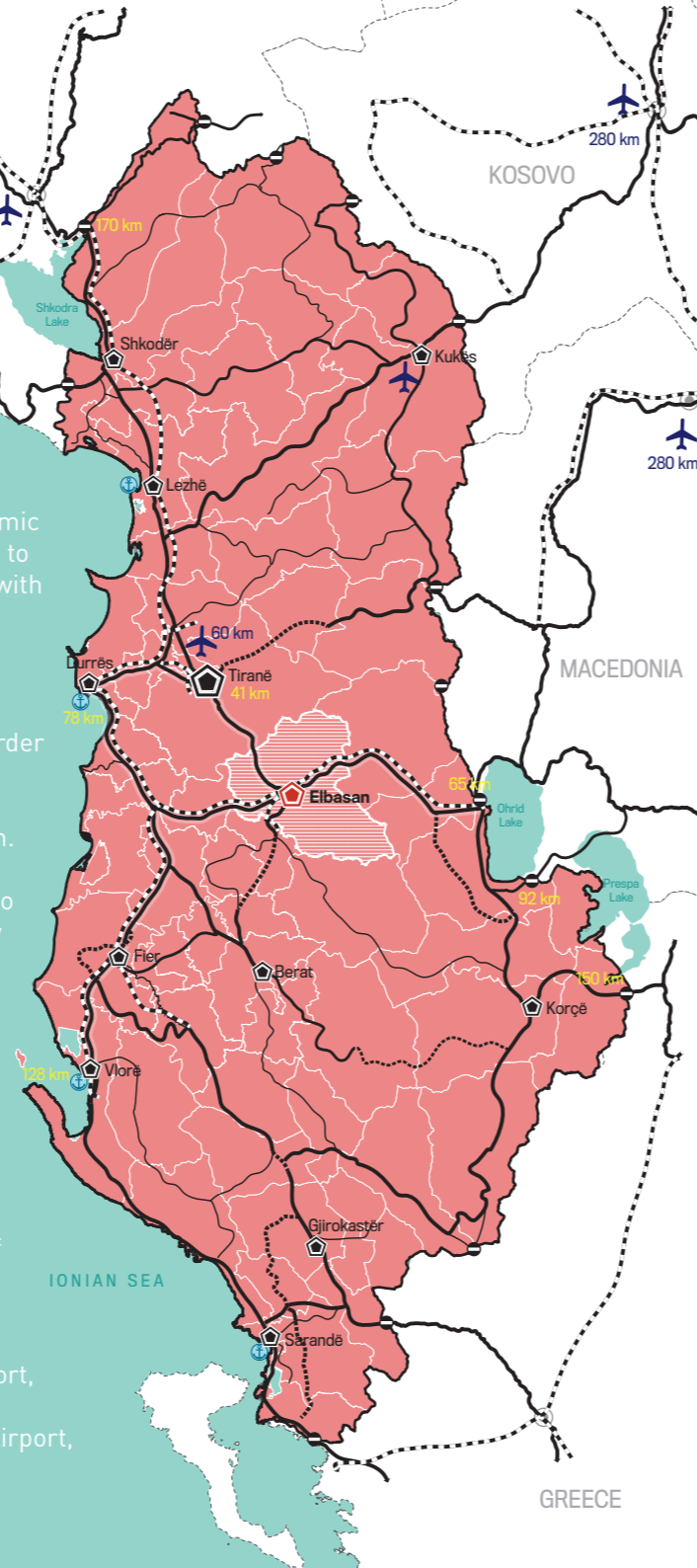
Airports:

The only airport of Albania is "Mother Tereza" in a distance of 60 km.

The Distance to the Prishtina Airport, Kosovo, is 280 km.

The Distance to the Skopje Airport, Macedonia, is 280 km.

The Distance to the Podgorica Airport, Montenegro, is 200 km.



ELBASAN

ACCESSIBILITY

Durres Port - 78 km
Vlora Port - 128 km
Tirana Airport - 60 km
Hani Hotit (border with MNE) - 170 km
Qafe Thane (border with macedonia)-65 km

ECONOMIC INDICATORS

Employment Rate: 57.9%
Available Labor Force: 6.3%
GDP per Capita: 75.2
Average Gross: 234 Euro
Foreign Companies: 190
Largest steel producer

PROPERTY CONTACTS

Albanian Investment
Development Agency
e: info@aida.gov.al

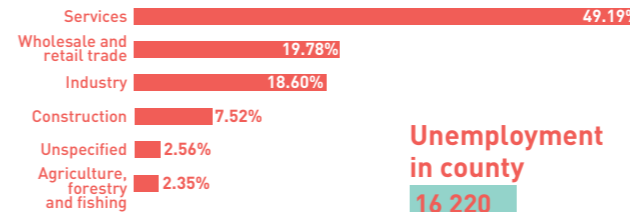


Employment

Public sector 14 421
Small Familiar business with 1 employee 6 212
Other private business with 2-10 employees 2 136
Big Companies 3 099



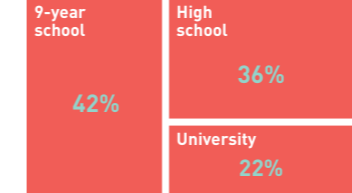
Employment by economic sector in the city



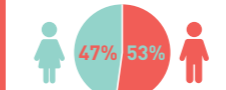
Unemployment in county

16 220

Unemployment by education



By gender

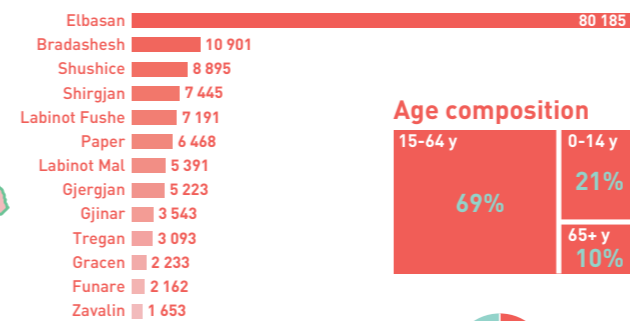


Age group 15-24

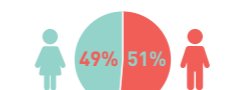
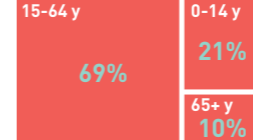
54%

Inhabitants in municipality

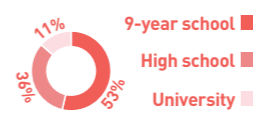
2015 144 382



Age composition



Gender ratio



Municipality Surface area

872 km²

City Density

3 615 inhabitants per km²

Education data

High schools 23
University faculties 5
University students +10.000

ROUTE DISTANCES TO EUROPEAN CAPITALS

DISTANCE IN KM



EX-METALLURGICAL PLANT

Area: 747 143 m²

Building Surface: 604 316 m²

Type: **BROWNFIELD**

Status: **STATE OWNED**

FACILITIES

Energy infrastructure
Water supplies
Direct connection with road infrastructure and highways

OPPORTUNITIES

Key sectors to succeed:

1. Storage of goods
2. Manufacture industry
3. Automotive industry
4. Logistic

TRANSFER TO PRIVATE OPERATORS

1. By privatization
2. Leasing
3. Emphyteusis

